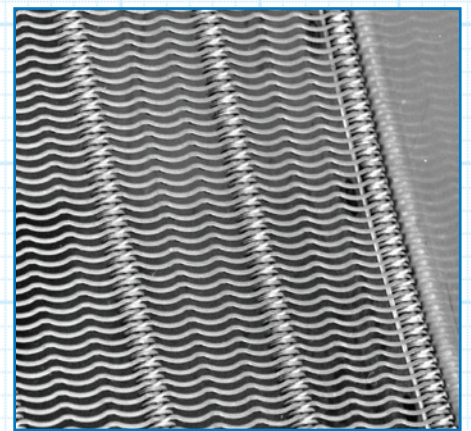
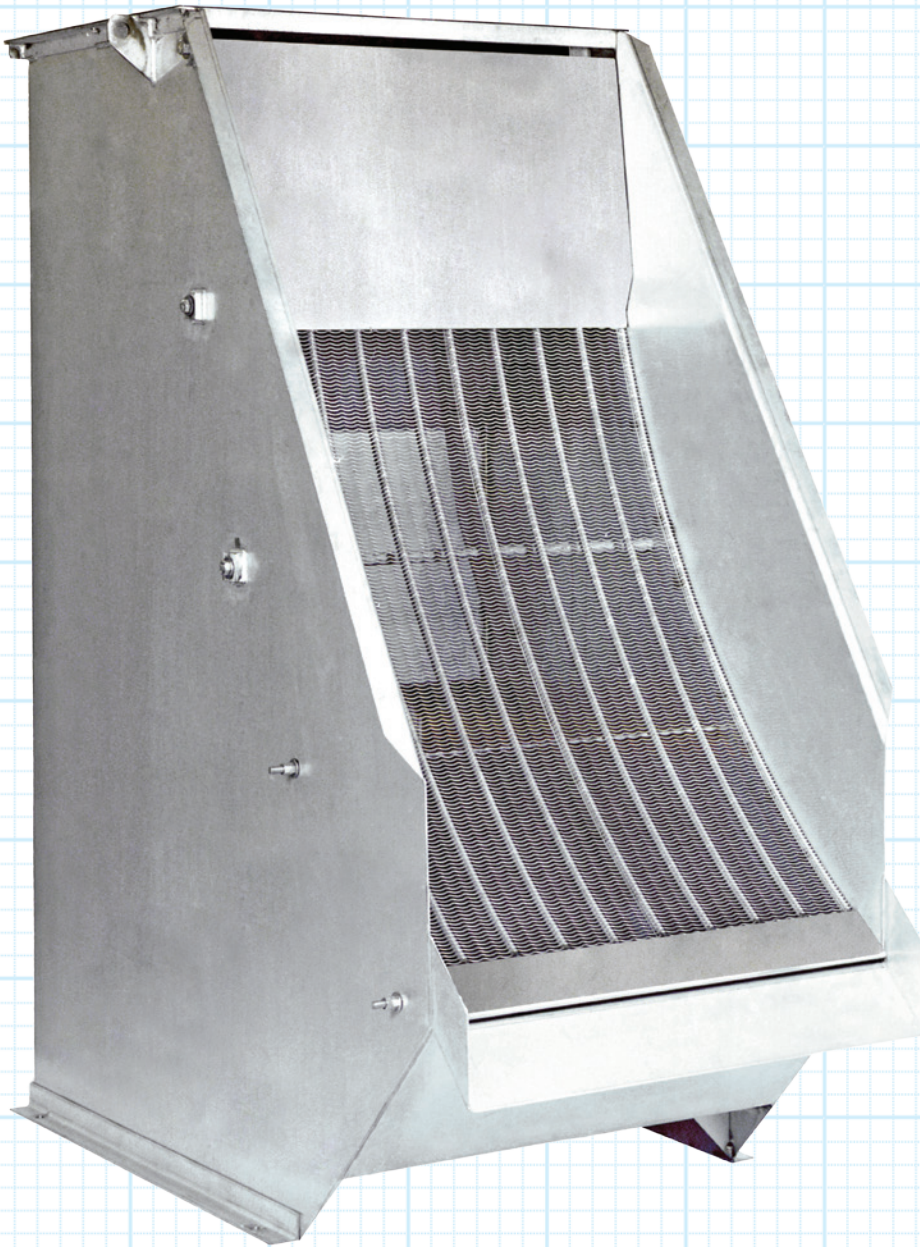


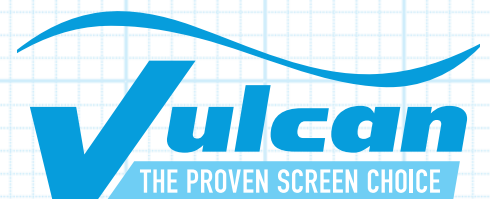


# Model SS Stato Screen

Product Information Guide



Find more product information at:  
[vulcanindustries.com](http://vulcanindustries.com)





# Model SS Stato Screen

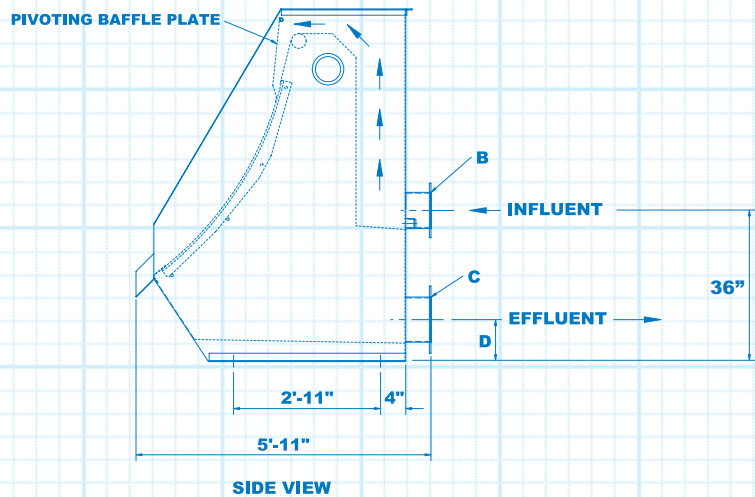
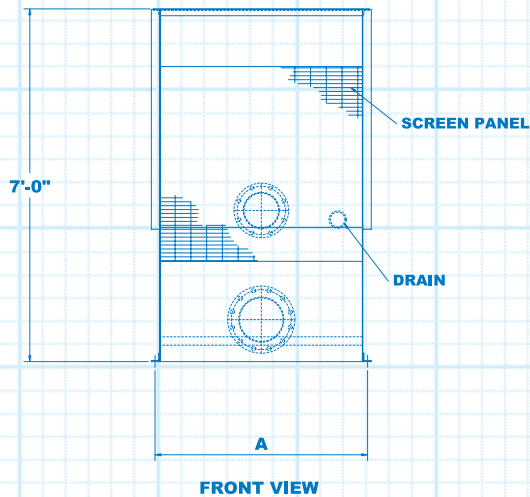
The Model SS Stato Screen is a non-mechanical screening device for separating solids from liquids. Because there are no mechanical parts and the unit requires no power, these screens can be installed with minimal capital investment. With a wide range of uses the Stato Screen is ideal for municipal waste water and industrial applications.

## Construction

Available in 304 or 316 Stainless Steel with flanged inlet and outlet pipes. Hinged enclosures, extended discharge chutes and spray systems are available as optional features.

## Operation

Wastewater is pumped through the pipe inlet into the influent chamber. As the influent level rises it flows over the weir and beneath the pivoting baffle plate. The liquids and solids flow over the triple-arc wave wire screen panel, and wastewater falls through the screen openings, while gravity and the addition of more screenings push captured solids toward the point of discharge. The water that falls through the screen enters the effluent distribution chamber and flows through the outlet pipe. A drip lip at the bottom of the screen directs any excess water to the effluent chamber. When the solids reach the bottom of the screen they slide off into a container, conveyor, or other suitable receiving device. Vulcan Industries offers a wide array of post-screening and dewatering devices. To assemble the most cost effective and efficient screening system, please contact your Vulcan Industries representative.



		Screen Openings									
INCH	0.010	0.020	0.030	0.040	0.060	0.080	0.100				
MM	0.25	0.50	.75	1.0	1.5	2.0	2.5				
Model	Design Flow (GPM)							A	B	C	D
SS-18	30	60	90	140	180	200	220	20 1/2"	4"	6"	7"
SS-24	40	80	120	200	260	300	340	26 1/2"	6"	8"	8"
SS-36	60	200	270	320	340	360	430	38 1/2"	6"	8"	8"
SS-48	140	500	630	700	740	780	860	50 1/2"	8"	10"	9"
SS-60	170	640	780	870	920	960	1070	62 1/2"	10"	12"	10"
SS-72	210	800	950	1050	1100	1150	1300	74 1/2"	10"	12"	10"
SS-96	270	1000	1200	1325	1400	1475	1650	98 1/2"	12"	14"	11"
SS-120	330	1200	1450	1600	1700	1800	2000	122 1/2"	12"	18"	13"

Flow rates are based upon clean water flow.

Find more product information at:  
[vulcanindustries.com](http://vulcanindustries.com)

212 S. Kirlin Street  
 Missouri Valley, Iowa 51555 USA  
 712-642-2755 Fax 712-642-4256

