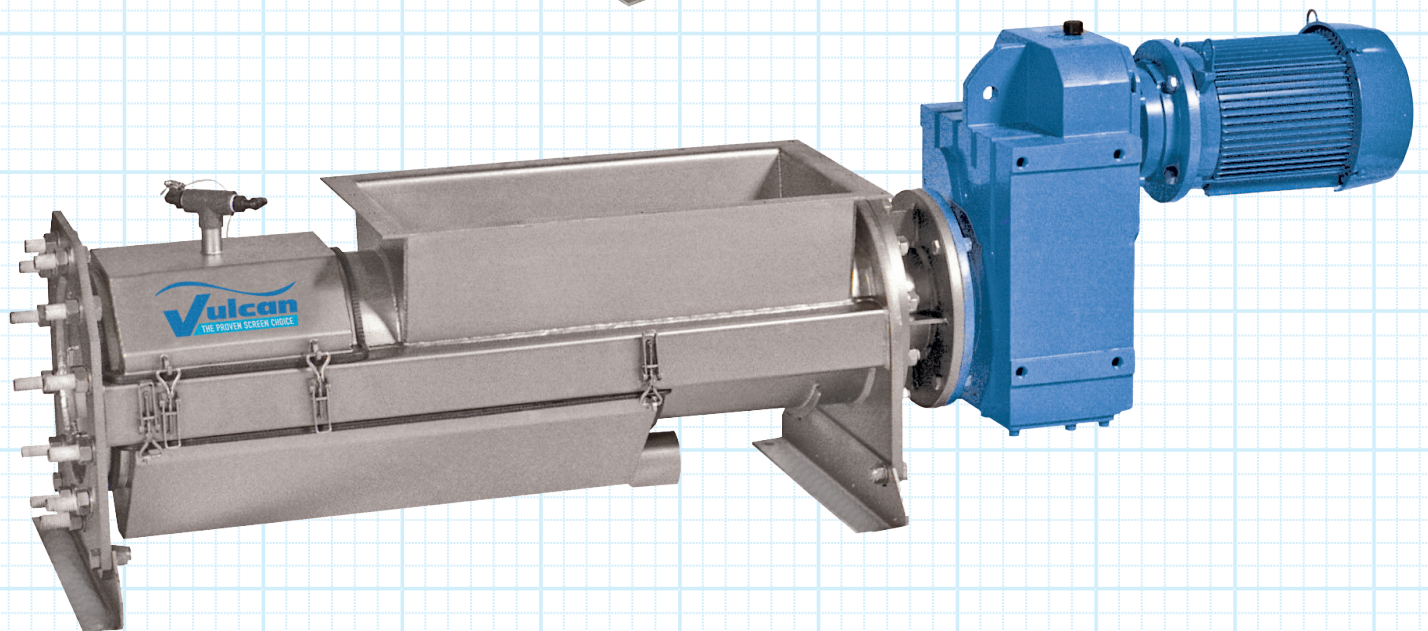
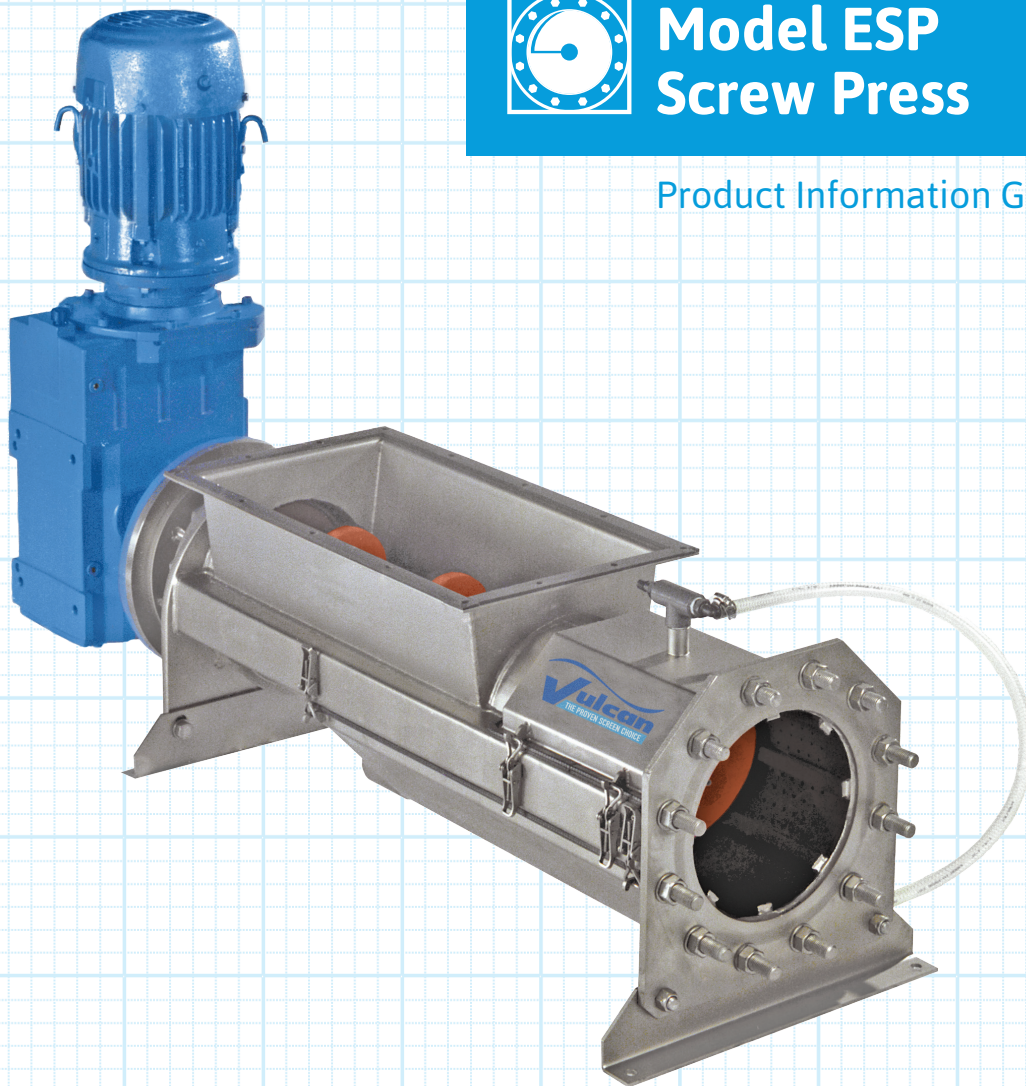


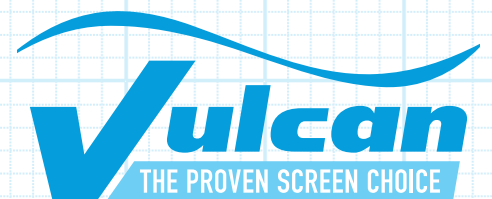


Model ESP Screw Press

Product Information Guide



Find more product information at:
vulcanindustries.com





Model ESP Screw Press

The **Model ESP Screw Press** consists of an axial thrust bearing with a stainless steel body; inlet hopper; wedge-wire drain; substantial, precision machined shafted spiral; press housing with compression zone; flushing nozzle; press water drain pan and drive assembly.

Construction

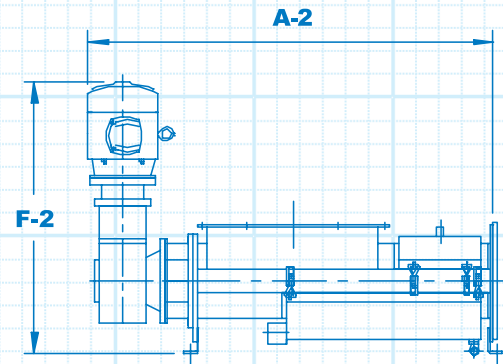
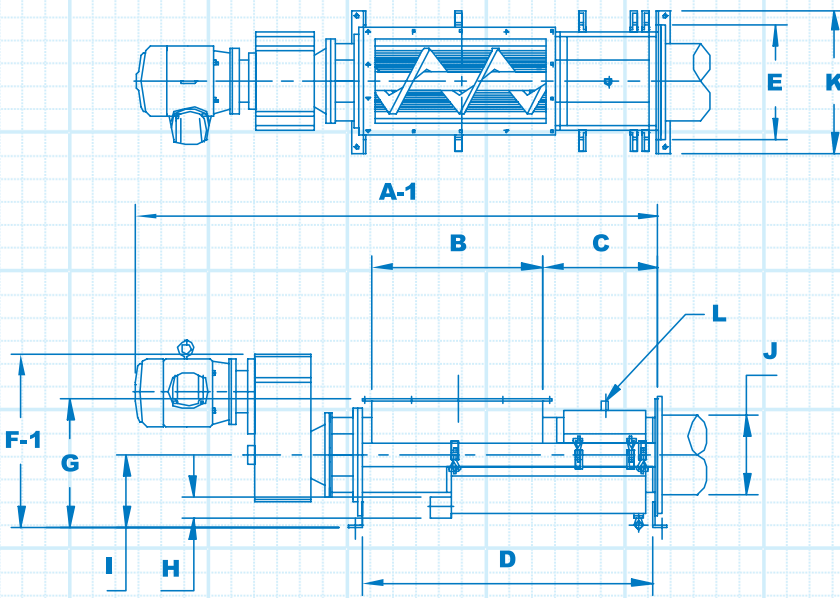
The shafted spiral is cantilevered off the thrust bearing, and does not rest in the housing. This eliminates metal-to-metal contact during operation.

The profiled bars used in the construction of the wedge-wire drain allows for greater flow than perforated drains and helps to prevent blinding. A nylon brush is affixed to the outside edge of the spiral to aid clearing the drain even when greasy material is present.

Operation

Screenings are received in the hopper directly from the mechanical screen or from a conveyor or flushing flume. Excess water drops away from the screenings and flows through the wedge-wire drain as the spiral moves the screenings into the dewatering zone where they are compacted and further dewatered up to 50%. Wash water flushes the dewatering zone and the drain pan and the compacted screenings are transported to a container, conveyor or other suitable receiving device.

The Model ESP Screw Press works in conjunction with the Vulcan Industries Mensch Bar Screen and Stair Screen as well as many other types of mechanical screens.



Type	Input Capacity of Raw Screenings
ESP 250	up to 99 ft ³ /h (up to 2.8 M ³ /h)
ESP 400	up to 247 ft ³ /h (up to 7.0 M ³ /h)

Type	A-1	A-2	B	C	D	E	F-1	F-2	G	H	I	J	K	L	Motor
ESP 250/600	74"	56"	24"x12"	16"	40 1/4"	15 3/4"	24"	40"	17 3/4"	3"	10"	10"	20"	1/2"	5 HP
ESP 250/800	82"	64"	32"x12"	16"	48 1/4"	15 3/4"	24"	40"	17 3/4"	3"	10"	10"	20"	1/2"	5 HP
ESP 250/1000	90"	72"	40"x12"	16"	56 1/4"	15 3/4"	24"	40"	17 3/4"	3"	10"	10"	20"	1/2"	5 HP
ESP 250/1200	98"	80"	48"x12"	16"	64 1/4"	15 3/4"	24"	40"	17 3/4"	3"	10"	10"	20"	1/2"	5 HP
ESP 400/600	96"	72"	24"x16"	24"	49 3/4"	33 3/4"	33 3/4"	62"	24 1/2"	4"	14"	16"	26"	3/4"	10 HP
ESP 400/8000	104"	80"	32"x16"	24"	57 3/4"	33 3/4"	33 3/4"	62"	24 1/2"	4"	14"	16"	26"	3/4"	10 HP
ESP 400/1000	112"	87"	40"x16"	24"	65 3/4"	33 3/4"	33 3/4"	62"	24 1/2"	4"	14"	16"	26"	3/4"	10 HP
ESP 400/1200	120"	95"	48"x16"	24"	73 3/4"	33 3/4"	33 3/4"	62"	24 1/2"	4"	14"	16"	26"	3/4"	10 HP

Find more product information at:
vulcanindustries.com

212 S. Kirlin Street
 Missouri Valley, Iowa 51555 USA
 712-642-2755 Fax 712-642-4256

