

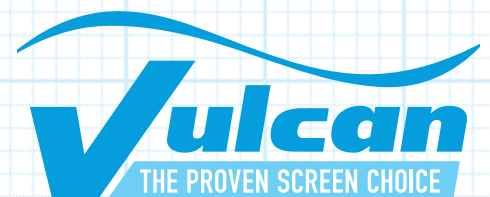


# Model ESK Grit Classifier

Product Information Guide



Find more product information at:  
[vulcanindustries.com](http://vulcanindustries.com)





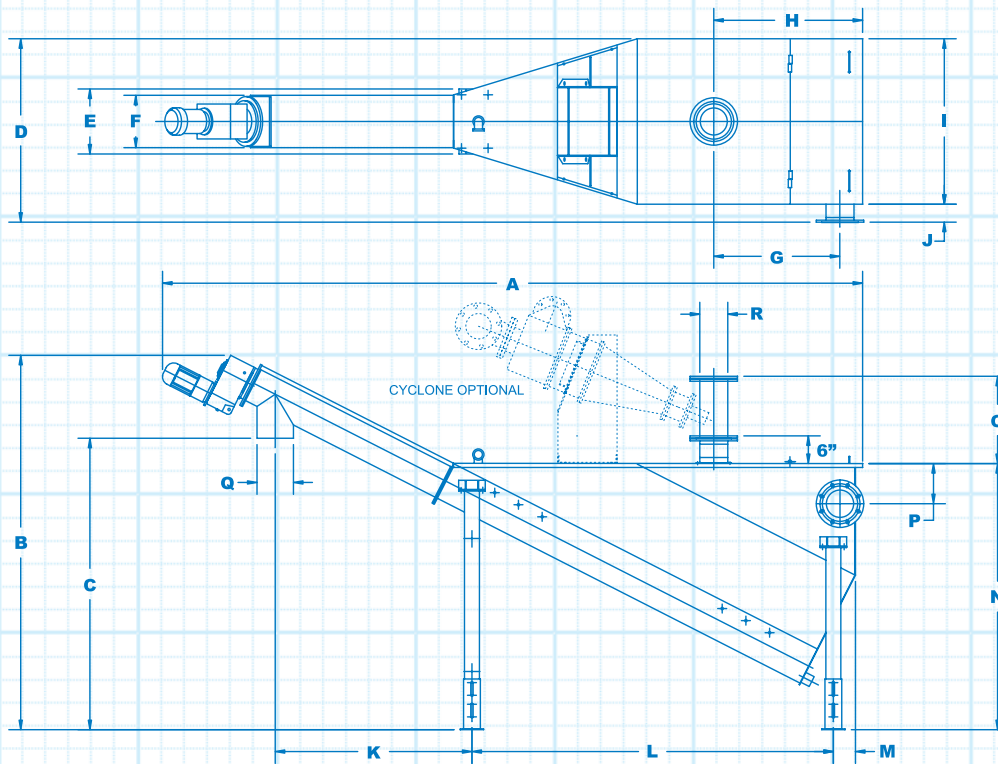
# Model ESK Grit Classifier

## Construction

The Model ESK Grit Classifier consists of a stainless steel sedimentation tank fitted with flanged inlet and outlet connections, support legs, baffled sidewall with scum board, integrated U-trough with replaceable non-metallic liner, a shaftless spiral and a gear motor drive. The tank is fitted with covers to fully enclose the process liquid and sediments, and a ball valve is installed at the bottom of the tank for draining. Grit cyclones are also available as an integral part of the classifier. Cyclones allow grit classifiers to receive higher flows.

## Operation

The Model ESK Grit Classifier receives the mixed flow of process liquids and sediments. The tank is designed to minimize turbulence and maximize settling of heavy inorganic sediments, so that optimum separation is achieved. The process liquid and lighter organic material exits the tank after passing over the sidewall baffle, while the heavy inorganic sediment is retained in the tank until the shaftless spiral transports it to the point of discharge. The spiral runs intermittently at a slow RPM to dewater the sediments.



### ▼ Flow Rate (without cyclone)

ESK 190	ESK 290	ESK 390
158 GPM	316 GPM	554 GPM

Type	A	B	C	D	E	F	G	H	I	J	K	L	M	N	O	P	Q	R
ESK 190	13'-4"	7'-6"	5'-10"	3'-7"	1'-5"	1'-0"	2'-7"	3'-0"	3'-3"	3"	4'-2"	6'-5"	5"	5'-7"	1'-9"	6"	Ø 6"	Ø 6"
ESK 290	18'-2"	9'-3"	7'-2"	5'-0"	1'-9"	1'-4"	3'-1"	3'-6"	4'-6"	4"	4'-11"	9'-4"	6"	6'-7"	1'-9"	11"	Ø 8"	Ø 8"
ESK 390	22'-11"	11'-6"	8'-2"	6'-9"	2'-10"	1'-9"	4'-8"	5'-3"	5'-11"	4"	6'-5"	12'-2"	6"	7'-11"	1'-9"	1'-3"	Ø 10"	Ø 10"

Find more product information at:  
[vulcanindustries.com](http://vulcanindustries.com)

212 S. Kirlin Street  
 Missouri Valley, Iowa 51555 USA  
 712-642-2755 Fax 712-642-4256

